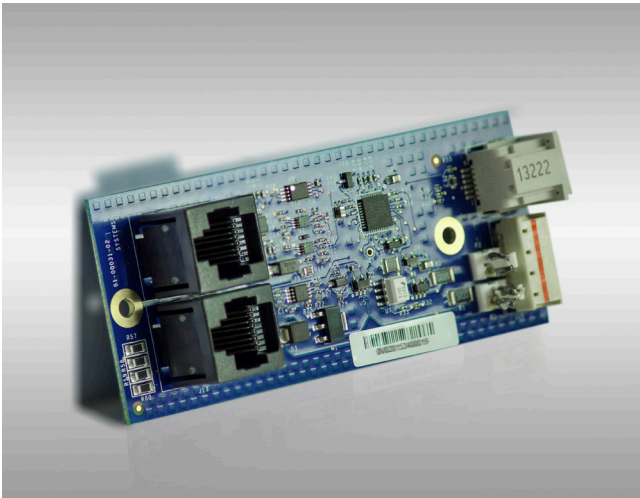


Issue 20170529 – May 2017

SG-2G-EMB-RTSC4821



smartengine LED Gateway, Generation 2, embedded, two channels

- Combines 2 channels up to 68 W
- Connects to sensor pod

GENERAL SPECIFICATIONS

Brand	smartengine
Generation	2
Product Type	Gateway
Application	Controls and dims a connected third-party LED fixture Transmits sensor data
Data Ports	2
Mount Type	Ceiling
Package Quantity	1

DIMENSIONS

Depth	106.68 mm 4.20 in
Height	30.48 mm 1.20 in
Width	76.20 mm 3.00 in
Weight	0.11 kg 0.25 lb

MECHANICAL SPECIFICATIONS

Active channels	2 qty
Engine Connector Interface	RJ45
Engine Connector Interface	2 qty
Fixture Connector Interface	10-pin mini connector
Material Type	Plastic
Opt. Engine Connector Interface ...	18 AWG spring loaded terminal
Opt. Engine Connector Interface ..	6 qty
Sensor Connector Interface	RJ25
Sensor Connector Interface	1 qty

Issue 20170529 – May 2017

SG-2G-EMB-RTSC4821

ELECTRICAL SPECIFICATIONS

ANSI/TIA Category 5e | 6 | 6A
Drive Current, channel 1 430 mA
Drive Current, channel 2 430 mA
Power Consumption, sty., max. .. 500 mW

ENVIRONMENTAL SPECIFICATIONS

Environmental Space..... Indoor | Plenum
Operating Humidity 10%-80%, non-condensing
Operating Temperature 0°C to +50°C (+32°F to +122°F)
Storage Humidity 5%-95%, non-condensing
Storage Temperature -20°C to +60°C (-4°F to +140°F)

SG-2G-EMB-RTSC4821

REGULATORY COMPLIANCE/CERTIFICATIONS

Agency	Classification
RoHS 2011/65/EU	Compliant

